

LED SOLAR WALL LIGHT

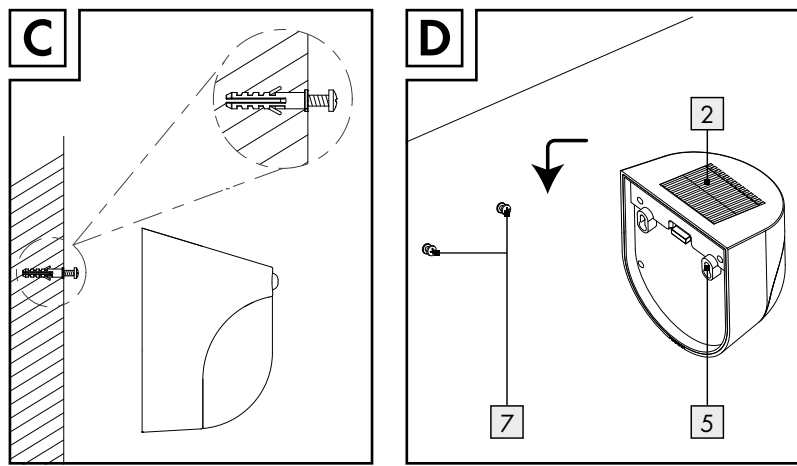
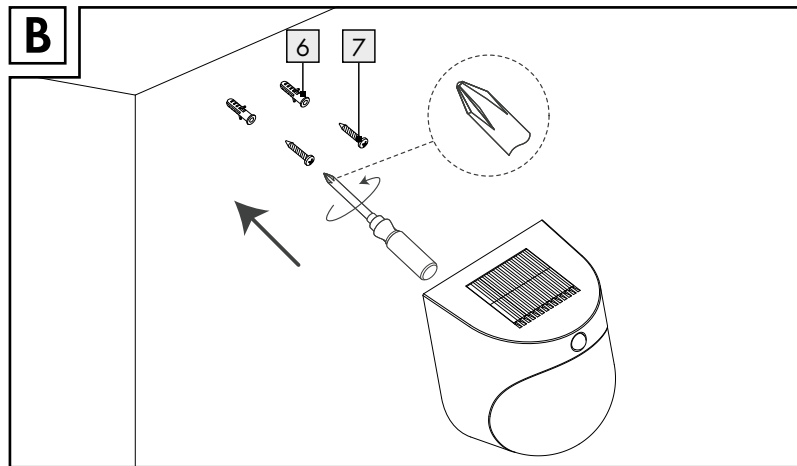
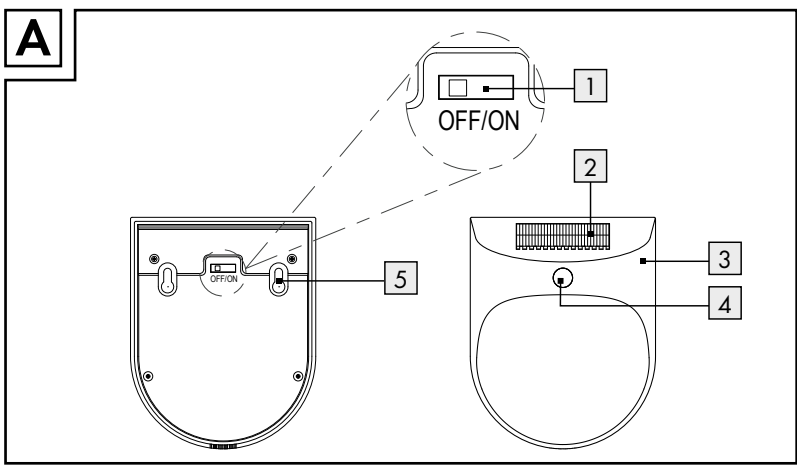
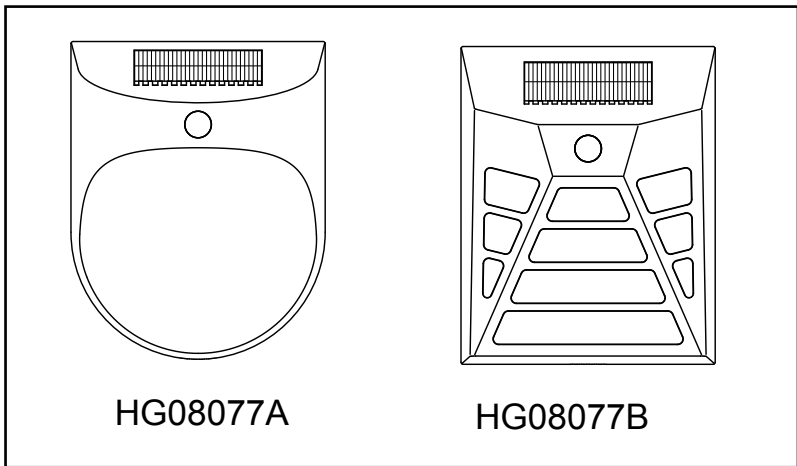
GB **IE** **NL**
LED SOLAR WALL LIGHT
 Assembly, operating and safety instructions

NL **BE**
LED-SOLAR-WANDLAMP
 Montage-, bedienings- en veiligheidsinstructies

DE **AT** **CH**
LED-SOLAR-WANDLEUCHE
 Montage-, Bedienungs- und Sicherheitshinweise

IAN 388035_2107

NL



List of pictograms used		
	Direct current /voltage	
	Splashproof IP44	
	Detection range: approx. 5m	

LED Solar wall light

Introduction

We congratulate you on the purchase of your new product. You have chosen a high quality product. The instructions for use are part of the product. They contain important information concerning safety, use and disposal. Before using the product, please familiarise yourself with all of the safety information and instructions for use. Only use the product as described and for the specified applications. If you pass the product on to anyone else, please ensure that you also pass on all the documentation with it.

Intended use

The product is intended to illuminate outdoor areas without electrical connection. The product is intended for private use only and is not suitable for commercial use

- Not suitable for household room illumination.

GB/IE/NL

GB/IE/NL

General safety instructions

BEFORE USING THE PRODUCT, PLEASE FAMILIARISE YOURSELF WITH ALL OF THE SAFETY INFORMATION AND INSTRUCTIONS FOR USE! WHEN PASSING THIS PRODUCT ON TO OTHERS, PLEASE ALSO INCLUDE ALL THE DOCUMENTS!

- This product may be used by children age 8 years and up, as well as by persons with reduced physical, sensory or mental capacities, or lacking experience and / or knowledge, so long as they are supervised or instructed in the safe use of the product and understand the associated risks. Children should not be allowed to play with the product. Cleaning and user maintenance should not be performed by children without supervision.
- Never leave children unsupervised with the packaging material. The packaging material represents a danger of suffocation. Children frequently underestimate the dangers.
- Keep children out of the area you are working in. A large number of screws and other small parts are included with delivery. These may prove life-threatening if swallowed or inhaled.
- Do not use this product if you notice any damage!
- The LEDs are not replaceable.
- If the LEDs fail at the end of their lives, the entire product must be replaced.

Safety instructions for batteries / rechargeable batteries

- DANGER TO LIFE!** Keep batteries / rechargeable batteries out of reach of children. If accidentally swallowed seek immediate medical attention.
- Swallowing may lead to burns, perforation of soft tissue, and death. Severe burns can occur within 2 hours of ingestion.

GB/IE/NL

GB/IE/NL

GB/IE/NL

GB/IE/NL

GB/IE/NL

Problem	Cause	Solution
The light flickers.	Rechargeable battery is almost drained.	Charge rechargeable battery (see section "Charging rechargeable battery").
Battery quickly loses its charge.	The solar cell [2] is dirty.	Clean the solar cell [2].
	Solar cell [2] is positioned incorrectly.	Reposition the solar cell [2] (refer to "Installation").
	Poor weather conditions.	Refer to "Winter-time use".

Disposal

The packaging is made entirely of recyclable materials, which you may dispose of at local recycling facilities.

- Observe the marking of the packaging materials for waste separation, which are marked with abbreviations (a) and numbers (b) with following meaning: 1-7: plastics / 20-22: paper and fibreboard / 80-98: composite materials.
- The product and packaging materials are recyclable, dispose of it separately for better waste treatment. The Triman logo is valid in France only.
- Contact your local refuse disposal authority for more details of how to dispose of your worn-out product.
- To help protect the environment, please dispose of the product properly when it has reached the end of its useful life and not in the household waste. Information on collection points and their opening hours can be obtained from your local authority.

GB/IE/NL

GB/IE/NL

GB/IE/NL

NL/BE

NL/BE

Algemene veiligheidsinstructies

LEES VOOR DE EERSTE INGEbruIKNAME VAN HET PRODUCT ALLE BEDIENINGS- EN VEILIGHEIDSinSTRUCTIES ZORGVULDIG DOOR! GEEF ALLE DOCUMENTEN MEE WANNEER U HET PRODUCT AAN DERDEN DOORGEeft!

- Dit product kan door kinderen vanaf 8 alsmede door personen met verminderde fysieke, sensorische of mentale vaardigheden of een gebrek aan ervaring en kennis worden gebruikt, als zij onder toezicht staan of ingestuurd worden met betrekking tot het veilige gebruik van het product en zij de hieruit voortvloeiende gevaren begrijpen. Kinderen mogen niet met het product spelen. Reiniging en onderhoud mag niet door kinderen zonder toezicht worden uitgevoerd.
- Laat kinderen nooit zonder toezicht bij het verpakkingsmateriaal. Er is kans op verstikking door het verpakkingsmateriaal. Kinderen onderschatten vaak de gevaren.
- Houd kinderen tijdens de montage bij de lamp vandaan. Tot de levering behoren tal van schroeven en andere kleine onderdelen. Bij inslikken of inhaleren kunnen deze levensgevaarlijk zijn.
- Gebruik het product niet wanneer u enige beschadiging heeft geconstateerd!
- De leds kunnen niet worden vervangen.
- Mochten de leds aan het einde van hun levensduur uitvallen dan dient het gehele product te worden vervangen.

Veiligheidsinstructies voor batterijen / accu's

- LEVENSGEVAAR!** Houd batterijen / accu's buiten het bereik van kinderen. Raadpleeg bij inslikken onmiddellijk een arts!
- Inslikken kan leiden tot ongewenste verbrandingen, perforatie van zacht weefsel en tot de dood. Ernstige inwendige verbrandingen kunnen binnen 2 uur na het inslikken optreden.

NL/BE

NL/BE

NL/BE

NL/BE

GB/IE/NL

- DANGER OF EXPLOSION!** Never recharge non-rechargeable batteries. Do not short-circuit batteries / rechargeable batteries and / or open them. Overheating, fire or bursting can be the result.
- Never throw batteries / rechargeable batteries into fire or water.
- Do not exert mechanical loads to batteries / rechargeable batteries.

Risk of leakage of batteries / rechargeable batteries

- Avoid extreme environmental conditions and temperatures, which could affect batteries / rechargeable batteries, e.g. radiators / direct sunlight.
- If batteries / rechargeable batteries have leaked, avoid contact with skin, eyes and mucous membranes with the chemicals! Flush immediately the affected areas with fresh water and seek medical attention!
- WEAR PROTECTIVE GLOVES!** Leaked or damaged batteries / rechargeable batteries can cause burns on contact with the skin. Wear suitable protective gloves at all times if such an event occurs.
- This product has a built-in rechargeable battery which cannot be replaced by the user. The removal or replacement of the rechargeable battery may only be carried out by the manufacturer or his customer service or by a similarly qualified person in order to avoid hazards. When disposing of the product, it should be noted that this product contains a rechargeable battery.

Function

Solar cell
 The solar cell [2] converts energy from sunlight into electricity. Using this electricity, built-in rechargeable battery is charged. This battery stores the electricity fed by the solar cell. The rechargeable battery must be charged prior to initial use (see "Charging rechargeable battery").

Before use

Note: Remove all packaging materials from the product.

Charging rechargeable battery

Note: The rechargeable battery inside the LED wall light [3] is fully charged at delivery. However, it may already has lost charge during transport from the manufacturer to the retail location. Therefore charge the rechargeable battery prior to use. During summer, initial charging will take at least one day in constant sunlight. For completely drained rechargeable battery, it takes about 2 to 4 days to fully recharge.

Installation

Note: The included mounting material is suitable for ordinary solid concrete or masonry construction. Other wall substrates may require other fastening materials. Seek specialist advice if necessary.

Note: You will need an electric drill.

- CAUTION! RISK OF INJURY!** Read the operating instructions for your drill.
- CAUTION!** Ensure that you do not damage any electricity cables in the wall or ceiling.
- When selecting the mounting location, pay attention to the following:

- The solar cell [2] requires direct sunlight when possible. Ideally, the solar cell surface will be directed to the south.
- Depending on the mounting height (ideally at 1.5 m) the motion sensor [4] has a detection range of max. 5m with a detection angle of 90°.
- Be sure the motion sensor [4] is not illuminated by street lighting at night. This can influence its functioning.

(e.g. batteries) or for damage to fragile parts, e.g. switches, rechargeable batteries or glass parts.

Warranty claim procedure

To ensure quick processing of your case, please observe the following instructions:

Please have the till receipt and the item number (IAN 388035_2107) available as proof of purchase. You will find the item number on the rating plate, an engraving on the front page of the instructions for use (bottom left), or as a sticker on the rear or bottom of the product. If functional or other defects occur, please contact the service department listed either by telephone or by e-mail. You can return a defective product to us free of charge to the service address that will be provided to you. Ensure that you enclose the proof of purchase (till receipt) and information about what the defect is and when it occurred.

Service

GB Service Great Britain
 Tel.: 08000569216
 E-Mail: owim@lidl.co.uk

IE Service Ireland
 Tel.: 1800 200736
 E-Mail: owim@lidl.ie

NL Service Northern Ireland
 Tel.: 0800 0927852
 E-Mail: owim@lidl.ie

CE IP44

Voor de ingebruikname

Opmerking: verwijder al het verpakkingsmateriaal van het product.

Batterij opladen

Opmerking: de in de led-wandlamp [3] geïntegreerde batterij is bij uitlevering volledig opgeladen. Het is echter mogelijk dat hij tijdens het transport van de fabrikant naar de verkoper iets van zijn lading heeft verloren. Laad daarom de batterij voor het eerste gebruik op. In de zomer duurt de eerste keer opladen bij constant zonlicht minstens een dag. Bij een volledig ontladen batterij duurt het ongeveer 2 tot 4 dagen tot hij weer volledig is opgeladen.

Montage

Opmerking: het meegeleverde montage materiaal is geschikt voor normale wanden / muren van beton of metselwerk. Voor andere soorten muren/wanden hebt u eventueel ander bevestigingsmateriaal nodig. Vraag indien nodig advies van een specialist.

Opmerking: u hebt een elektrische boormachine nodig.

- LET OP! LETSELGEVAAR!** Lees de gebruiksaanwijzing van uw boormachine.
- LET OP!** Let erop dat u geen elektrische kabels in de wand of het plafond beschadigt.
- Let bij de keuze van de montageplek van het product op de volgende punten:

- De zonnecel [2] heeft zo direct mogelijk zonlicht nodig. Optimaal is het als het zonnecel oppervlak naar het zuiden is gericht.
- De bewegingssensor [4] heeft, afhankelijk van de montagehoogte (een hoogte van 1,5 meter is ideaal), een detectiebereik van max. 5 m - bij een detectiehoek van 90°.

- Mark the distance between the mounting holes [5] (back of the LED wall light [3] (see Fig. A) at a distance of approx. 72 mm on the desired mounting surface. Use a spirit level if necessary.
- Now drill the mounting holes (Ø approx. 6 mm, depth approx. 30 mm).
- Insert the supplied wall plugs [6] into the drill holes.
- Insert the supplied mounting screws [7] into the wall plugs [6] and tighten them using a cross-tip screwdriver (see Fig. B).
- Let the mounting screws [7] project a distance of about 5 mm from the wall. (see Fig. C)
- Set the ON/OFF switch [1] of the LED wall light [3] to the "ON" position (see Fig. A).
- Then attached the LED wall light [3] to the mounting screws [7] using the mounting holes [5] (see Fig. D).
- After mounting, check that the LED wall light [3] is fitted securely.

Your product is now ready for use.

Start-up

The motion sensor [4] is activated at an illumination level of approx.<100 Lux. The LED wall light [3] will automatically switch on in darkness as soon as the motion sensor [4] detects motion. The light will automatically switch off after approx. 30 seconds if motion is no longer detected. If any motion is detected after it has been switched off, the light will automatically switch on again for approx. 30 seconds.

- To switch off the LED wall light [3], switch the ON/OFF switch [1] to the "OFF" position.

GB/IE/NL

GB/IE/NL

GB/IE/NL

Legenda van de gebruikte pictogrammen		
	Gelijkstroom /spanning	
	Spatwaterdicht IP44	
	Detecteerbereik: ca. 5 m	

LED-solar-wandlamp

Inleiding

Hartelijk gefeliciteerd met de aankoop van uw nieuwe product. U heeft voor een hoogwaardig product gekozen. De gebruiksaanwijzing is een deel van het product. Deze bevat belangrijke aanwijzingen voor veiligheid, gebruik en verwijdering. Maakt U zich voor de ingebruikname van het product met alle bedienings- en veiligheidsvoorschriften vertrouwd. Gebruik het product alleen zoals beschreven en voor de aangegeven toepassingsgebieden. Overhandig alle documenten bij doorgifte van het product aan derden.

Correct gebruik

Het product is bedoeld voor verlichting buitenshuis op plekken waar geen stroomaansluiting aanwezig is. Het product is alleen geschikt voor privé- doeleinden en niet voor commercieel gebruik.

- Dit product is niet geschikt als kamerverlichting in huishoudens.

GB/IE/NL

NL/BE

NL/BE

Parts description

- | | | |
|--|--|--|
| | | |
| | | |
| | | |

Technical data

Operating voltage: 2.4 V===
 Rechargeable battery: Ni-MH battery 2.4 V===, 600mAh (not replaceable)
 LEDs: 4
 Total power consumption: 0.7W (HG08077A), 1.4W (HG08077B)
 Solar cell: approx. 3.5 V, approx. 50 mA
 Motion sensor: Range: max. 5m, detection angle: approx. 90°
 Degree of protection: IP44 (splash-proof)

Scope of delivery

Check immediately after unpacking that the parts are complete and that the product is in proper condition.

- | | |
|--|---|
| 1 LED wall light (consisting of built-in rechargeable battery) | 2 Wall plugs (ø 6 mm) |
| 2 Screws (Ø 4 x 30 mm) | 1 Assembly, operating and safety instructions |

Winter-time use

Due to the low level of solar radiation in the winter, the charging of the rechargeable battery may be reduced and correspondingly the effectiveness of the product may decrease. For this reason, check that the solar cell [2] remains clear of shadow for the whole day, despite the low position of the sun. If necessary, remove ice or snow.

Cleaning and care

- Before cleaning, switch the product off.
- Use a slightly dampened, lint-free cloth and mild cleaning agent to clean.
- Regularly check the motion sensor [4] and solar cell [2] particularly for dirt.
- Regularly clean the motion sensor [4] and solar cell [2] to ensure proper functionality.
- Keep the solar cell [2] free of snow and ice, especially in winter.

Troubleshooting

Problem	Cause	Solution
The product does not switch on.	ON/OFF switch [1] set to "OFF" position. Rechargeable battery is drained.	ON/OFF switch [1] to "ON" position. Charge rechargeable battery (see section "Charging rechargeable battery").
The motion sensor [4] is dirty.		Clean the motion sensor [4].

Beschrijving van de onderdelen

- | | | |
|--|--|--|
| | | |
| | | |
| | | |

Technische gegevens

Bedrijfsspanning: 2.4 V===
 Batterij: Ni-MH-batterij 2,4 V===, 600mAh (niet vervangbaar)
 Leds: 4
 Totaal opgenomen vermogen: 0,7W (HG08077A), 1,4W (HG08077B)
 Zonnecel: ca. 3,5 V, ca. 50 mA
 Bewegingssensor: reikwijdte: max. 5 m, detectiehoek: ca. 90°
 Beschermingstype: IP44 (spatwaterdicht)

Omvang van de levering

Controleer de levering altijd direct na het uitpakken op volledigheid en optimale staat van het product:

- | | | |
|--|--|---|
| 1 led-wandlamp (met ingebouwde batterij) | 1 gebruiksaanwijzing met montage-, 2 schroeven (Ø 4 x 30 mm) | 1 bedienings- en veiligheidsinstructies |
| 2 pluggen (Ø 6 mm) | | |

Gebruik in de winter

Vanwege het weinige zonlicht kan het opladen van de batterij in de winter minder worden, waardoor ook de prestaties van het product afnemen. Controleer daarom ook in de winter of de zonnecel [2] ondanks het weinige zonlicht de hele dag door uit de schaduw blijft. Verwijder indien nodig ijs of sneeuw.

Reiniging en onderhoud

- Schakel het product voor de reiniging uit.
- Gebruik voor de reiniging een iets vochtige, pluisvrije doek en een mild schoonmaakmiddel.
- Controleer vooral de bewegingssensor [4] en de zonnecel [2] regelmatig op verontreinigingen.
- Reinig de bewegingssensor [4] en de zonnecel [2] regelmatig om een onberispelijke werking te kunnen waarborgen.
- Houd met name de zonnecel [2] in de winter sneeuw- en ijsvrij.

Storingen oplossen

Probleem	Oorzaak	Oplossing
Het product gaat niet aan.	AAN/UIT-schakelaar [1] staat op 'OFF'.	AAN/UIT-schakelaar [1] op 'ON' zetten.
	De batterij is leeg.	Batterij opladen (zie 'Batterij opladen').
	De bewegingssensor [4] is vuil.	Reinig de bewegingssensor [4].

NL/BE

NL/BE

GB/IE/NL

