

## LED PARTY LIGHT

<div><span><span><span></span></span></span></div> <div>GB <span> </span><span> </span><span>(E)</span> <span> </span><span> </span><span>(N)</span></div>	
<strong>LED PARTY LIGHT</strong> <div>Operation and Safety Notes</div>	
<div><span><span><span></span></span></span></div> <div>GB</div>	
<strong>LED-PARTYLAMPE</strong> <div>Brugs- og sikkerhedsanvisninger</div>	
<div><span><span><span></span></span></span></div> <div>FR <span> </span><span> </span><span>(E)</span> <span> </span><span> </span><span>(B)</span></div>	
<strong>LAMPE LED À EFFET</strong> <div>Instructions d'utilisation et consignes de sécurité</div>	
<div><span><span><span></span></span></span></div> <div>(N) <span> </span><span> </span><span>(E)</span></div>	
<strong>LED-PARTYLAMP</strong> <div>Bedienings- en veiligheidsinstructies</div>	
<div><span><span><span></span></span></span></div> <div>GB <span> </span><span> </span><span>(E)</span> <span> </span><span> </span><span>(N)</span></div>	
<strong>LED-PARTYLEUCHE</strong> <div>Bedienungs- und Sicherheitshinweise</div>	

## IAN 304011

<span><span></span></span>	<span><span></span></span>	<span><span></span></span>	<span><span></span></span>	<span><span></span></span>	<span><span></span></span>
<span><span></span></span>	<span><span></span></span>	<span><span></span></span>	<span><span></span></span>	<span><span></span></span>	<span><span></span></span>

**Note:** The product is supplied with the batteries already in place.

- Pull the insulating strip out of the battery compartment **7**.

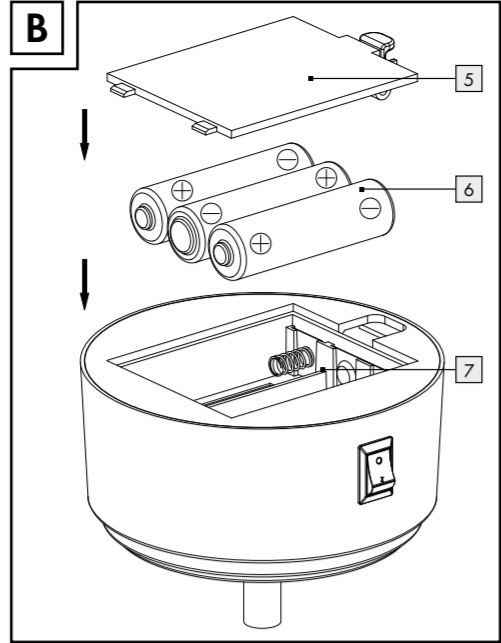
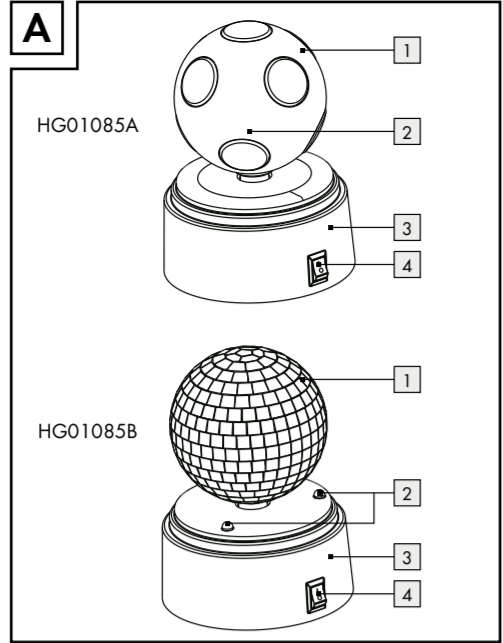
### ● Start-up

- Place the base **3** of the product on a sturdy, level surface.
- Slide the switch **4** to position **I** to switch the product on.

The following functions will be activated depending on the model:

**Model HGO1085A**

- The decorative attachment **1** will rotate. The LED **2** inside the decorative attachment will light up, producing lighting effects.



### LED Party Light

#### ● Introduction

We congratulate you on the purchase of your new product. You have chosen a high quality product. The instructions for use are part of the product. They contain important information concerning safety, use and disposal. Before using the product, please familiarise yourself with all of the safety information and instructions for use. Only use the product as described and for the specified applications. If you pass the product on to anyone else, please ensure that you also pass on all the documentation with it.

#### ● Intended use

- This product is suitable as animated décor, to be operated indoors only. This product is only intended for private household use, not for commercial purposes.

<span><span></span></span>	<span><span></span></span>	<span><span></span></span>	<span><span></span></span>	<span><span></span></span>	<span><span></span></span>
<span><span></span></span>	<span><span></span></span>	<span><span></span></span>	<span><span></span></span>	<span><span></span></span>	<span><span></span></span>

marked with abbreviations (a) and numbers (b) with following meaning: 1–7: plastics / 20–22: paper and fibreboard / 80–98: composite materials.

- The product and packaging materials are recyclable, dispose of it separately for better waste treatment. The Triman logo is valid in France only.

- Contact your local refuse disposal authority for more details of how to dispose of your worn-out product.

- To help protect the environment, please dispose of the product properly when it has reached the end of its useful life and not in the household waste. Information on collection points and their opening hours can be obtained from your local authority.

<span><span></span></span>	<span><span></span></span>	<span><span></span></span>	<span><span></span></span>
<span><span></span></span>	<span><span></span></span>	<span><span></span></span>	<span><span></span></span>
<span><span></span></span>	<span><span></span></span>	<span><span></span></span>	<span><span></span></span>
<span><span></span></span>	<span><span></span></span>	<span><span></span></span>	<span><span></span></span>

#### ● Technical Data

Operating voltage: 4.5V===
Direct current)
Batteries: 3 x 1.5V, Type AA
LED: 2 LEDs (for model HGO1085A)
3 LEDs (for model HGO1085B)
LED life: 10,000 hours
Light on time: approx. 24 hours

#### ● Scope of delivery

1 LED party light
3 Batteries (installed)
1 Set of instructions for use

<span><span></span></span>	<span><span></span></span>	<span><span></span></span>	<span><span></span></span>
<span><span></span></span>	<span><span></span></span>	<span><span></span></span>	<span><span></span></span>

<span><span></span></span>	<span><span></span></span>	<span><span></span></span>	<span><span></span></span>
<span><span></span></span>	<span><span></span></span>	<span><span></span></span>	<span><span></span></span>

Faulty or used batteries / rechargeable batteries must be recycled in accordance with Directive 2006/66/EC and its amendments. Please return the batteries / rechargeable batteries and / or the product to the available collection points.

- Environmental damage through incorrect disposal of the batteries / rechargeable batteries!**

Batteries / rechargeable batteries may not be disposed of with the usual domestic waste. They may contain toxic heavy metals and are subject to hazardous waste treatment rules and regulations. The chemical symbols for heavy metals are as follows: Cd = cadmium, Hg = mercury, Pb = lead. That is why you should dispose of used batteries / rechargeable batteries at a local collection point.

- Safety notices**
- READ THESE INSTRUCTIONS BEFORE USING THE PRODUCT! KEEP THE INSTRUCTIONS FOR USE IN A SAFE PLACE FOR FUTURE REFERENCE!

- ⚠️ [WARNING] RISK OF FATAL INJURY AND ACCIDENT HAZARD FOR TODDLERS AND SMALL CHILDREN!** Never leave children unattended with the packaging material. The packaging material represents a danger of suffocation. Children frequently underestimate the dangers. Please keep the product out of the reach of children at all times.

- This product may be used by children age 8 years and up, as well as by persons with reduced physical, sensory or mental capacities, or lacking experience and/or knowledge, so long as they are supervised or instructed in the safe use of the product and understand the associated risks. Do not allow children to play with the product. Cleaning and user maintenance should not be performed by children without supervision.
- Check the product for damage before use. Never use a damaged product!

- DANGER TO LIFE!** Keep batteries / rechargeable batteries out of reach of children. If accidentally swallowed seek immediate medical attention.
- DANGER OF EXPLOSION!** Never recharge non-rechargeable batteries. Do not short-circuit batteries / rechargeable batteries and / or open them. Overheating, fire or bursting can be the result.
- Never throw batteries / rechargeable batteries into fire or water.

#### ● Warranty

The product has been manufactured to strict quality guidelines and meticulously examined before delivery. In the event of product defects you have legal rights against the retailer of this product. Your legal rights are not limited in any way by our warranty detailed below.

The warranty for this product is 3 years from the date of purchase. Should this product show any fault in materials or manufacture within 3 years from the date of purchase, we will repair or replace it – at our choice – free of charge to you.

The warranty period begins on the date of purchase. Please keep the original sales receipt in a safe location. This document is required as your proof of purchase. This warranty becomes void if the product has been damaged, or used or maintained improperly.

- Do not exert mechanical loads to batteries / rechargeable batteries.

- Risk of leakage of batteries / rechargeable batteries**

- Avoid extreme environmental conditions and temperatures, which could affect batteries / rechargeable batteries, e.g. radiators / direct sunlight.
- If batteries / rechargeable batteries have leaked, avoid contact with skin, eyes and mucous membranes with the chemicals! Flush immediately the affected areas with fresh water and seek medical attention!
- WEAR PROTECTIVE GLOVES!** Leaked or damaged batteries / rechargeable batteries can cause burns on contact with the skin. Wear suitable protective gloves at all times if such an event occurs.
- In the event of a leakage of batteries / rechargeable batteries, immediately remove them from the product to prevent damage.

- Do not exert mechanical loads to batteries / rechargeable batteries.

**Risk of leakage of batteries / rechargeable batteries**

- Avoid extreme environmental conditions and temperatures, which could affect batteries / rechargeable batteries, e.g. radiators / direct sunlight.
- If batteries / rechargeable batteries have leaked, avoid contact with skin, eyes and mucous membranes with the chemicals! Flush immediately the affected areas with fresh water and seek medical attention!
- WEAR PROTECTIVE GLOVES!** Leaked or damaged batteries / rechargeable batteries can cause burns on contact with the skin. Wear suitable protective gloves at all times if such an event occurs.
- In the event of a leakage of batteries / rechargeable batteries, immediately remove them from the product to prevent damage.

- Only use the same type of batteries / rechargeable batteries. Do not mix used and new batteries / rechargeable batteries.
- Remove batteries / rechargeable batteries if the product will not be used for a longer period.

### Risk of damage of the product

- Only use the specified type of battery / rechargeable battery!
- Insert batteries / rechargeable batteries according to polarity marks (+) and (-) on the battery / rechargeable battery and the product.
- Clean the contacts on the battery / rechargeable battery and in the battery compartment before inserting!
- Remove exhausted batteries / rechargeable batteries from the product immediately.

### ● Before use

**Note:** Remove all packaging materials from the product.

<span><span></span></span>	<span><span></span></span>	<span><span></span></span>	<span><span></span></span>	<span><span></span></span>	<span><span></span></span>
<span><span></span></span>	<span><span></span></span>	<span><span></span></span>	<span><span></span></span>	<span><span></span></span>	<span><span></span></span>

<span><span></span></span>	<span><span></span></span>	<span><span></span></span>	<span><span></span></span>
<span><span></span></span>	<span><span></span></span>	<span><span></span></span>	<span><span></span></span>

<span><span></span></span>	<span><span></span></span>	<span><span></span></span>	<span><span></span></span>
<span><span></span></span>	<span><span></span></span>	<span><span></span></span>	<span><span></span></span>

<span><span></span></span>	<span><span></span></span>	<span><span></span></span>	<span><span></span></span>
<span><span></span></span>	<span><span></span></span>	<span><span></span></span>	<span><span></span></span>

- ⚠️ ADVARSEL! LIVS- OG ULYKSEFARE FOR SMÅBØRN OG BØRNI!** Lad børn aldrig være uden opsyn med emballagematerialet. Der består kvælningsfare på grund af emballagematerialet. Børn undervurderer hyppigt farerne. Hold altid børn på afstand af produktet.
- Dette produkt kan benyttes af børn fra 8-årsalderen og opad, samt af personer med forringede fysiske, følelsesmæssige eller mentale evner eller mangel på erfaring og viden, når de er under opsyn eller er blevet vejledt med hensyn til produktet og forstår de deraf resulterende farer. Børn må ikke lege med produktet. Rengøring og brugervedligeholdelse

<span><span></span></span>	<span><span></span></span>	<span><span></span></span>	<span><span></span></span>
<span><span></span></span>	<span><span></span></span>	<span><span></span></span>	<span><span></span></span>

<span><span></span></span>	<span><span></span></span>	<span><span></span></span>	<span><span></span></span>
<span><span></span></span>	<span><span></span></span>	<span><span></span></span>	<span><span></span></span>

Nous vous félicitons pour l'achat de votre nouveau produit. Vous avez opté pour un produit de grande qualité. Le mode d'emploi fait partie intégrante de ce produit. Il contient des indications importantes pour la sécurité, l'utilisation et la mise au rebut. Veuillez lire consciencieusement toutes les indications d'utilisation et de sécurité du produit. Ce produit doit uniquement être utilisé conformément aux instructions et dans les domaines d'application spécifiés. Lors d'une session à tiers, veuillez également remettre tous les documents.

- UTILISATION CONFORME**
- Ce produit, en tant que décoration animée, est exclusivement conçu pour un usage intérieur. Le produit est uniquement destiné à un usage domestique et non à un usage commercial.

<span><span></span></span>	<span><span></span></span>	<span><span></span></span>	<span><span></span></span>
<span><span></span></span>	<span><span></span></span>	<span><span></span></span>	<span><span></span></span>

<span><span></span></span>	<span><span></span></span>	<span><span></span></span>	<span><span></span></span>
<span><span></span></span>	<span><span></span></span>	<span><span></span></span>	<span><span></span></span>

<span><span></span></span>	<span><span></span></span>	<span><span></span></span>	<span><span></span></span>
<span><span></span></span>	<span><span></span></span>	<span><span></span></span>	<span><span></span></span>

<span><span></span></span>	<span><span></span></span>	<span><span></span></span>	<span><span></span></span>
<span><span></span></span>	<span><span></span></span>	<span><span></span></span>	<span><span></span></span>

- Nettoyage**
- Nettoyez le produit à l'aide d'un plumeau.

- Mise au rebut**
- L'emballage se compose de matières recyclables pouvant être mises au rebut dans les déchetteries locales.

- Veuillez respecter l'identification des matériaux d'emballage pour le tri sélectif, ils sont identifiés avec des abréviations (a) et des chiffres (b) ayant la signification suivante : 1–7 : plastiques / 20–22 : papiers et cartons / 80–98 : matériaux composites.

<span><span></span></span>	<span><span></span></span>	<span><span></span></span>	<span><span></span></span>
<span><span></span></span>	<span><span></span></span>	<span><span></span></span>	<span><span></span></span>

- Le produit et les matériaux d'emballage sont recyclables, mettez-les au rebut séparément pour un meilleur traitement des déchets. Le logo Triman n'est valable qu'en France.

**Note:** Please note the correct polarity and correct battery type. Both are shown in the battery compartment **7** and in Figure B.

- Close the battery cover **5**.
- Slide the switch **4** to position **O** to switch the product off.

### ● Replacing / inserting batteries (Fig. B)

If the light output or the rotation of the product noticeably decreases, the batteries are drained and must be replaced. Do so as described below:

- Ensure the product is switched off.
- Remove the battery cover **5**.
- If applicable, remove the old batteries **6**.
- Insert new batteries as shown in Figure B.

- Observe the marking of the packaging materials for waste separation, which are

<span><span></span></span>	<span><span></span></span>	<span><span></span></span>	<span><span></span></span>
<span><span></span></span>	<span><span></span></span>	<span><span></span></span>	<span><span></span></span>

<span><span></span></span>	<span><span></span></span>	<span><span></span></span>	<span><span></span></span>
<span><span></span></span>	<span><span></span></span>	<span><span></span></span>	<span><span></span></span>

<span><span></span></span>	<span><span></span></span>	<span><span></span></span>	<span><span></span></span>
<span><span></span></span>	<span><span></span></span>	<span><span></span></span>	<span><span></span></span>

<span><span></span></span>	<span><span></span></span>	<span><span></span></span>	<span><span></span></span>
<span><span></span></span>	<span><span></span></span>	<span><span></span></span>	<span><span></span></span>

- BÆR BESKYTTELSESHANDSKER!** Udløbe eller beskadigede batterier / akkuer kan forårsage ætsninger ved berøring med huden. Bær i dette tilfælde derfor egnede beskyttelseshandsker.
- I tilfælde af en lækage hos batterierne / akkuerne, skal De fjerne disse med det samme fra produktet for at undgå beskadigelser.
- Anvend kun batterier / akkuer af samme type. Bland ikke gamle batterier / akkuer med nye!
- Fjern batterierne / akkuerne, når produktet ikke anvendes i en længere periode.

<span><span></span></span>	<span><span></span></span>	<span><span></span></span>	<span><span></span></span>
<span><span></span></span>	<span><span></span></span>	<span><span></span></span>	<span><span></span></span>

<span><span></span></span>	<span><span></span></span>	<span><span></span></span>	<span><span></span></span>
<span><span></span></span>	<span><span></span></span>	<span><span></span></span>	<span><span></span></span>

<span><span></span></span>	<span><span></span></span>	<span><span></span></span>	<span><span></span></span>
<span><span></span></span>	<span><span></span></span>	<span><span></span></span>	<span><span></span></span>

<span><span></span></span>	<span><span></span></span>	<span><span></span></span>	<span><span></span></span>
<span><span></span></span>	<span><span></span></span>	<span><span></span></span>	<span><span></span></span>

- Contenu de la livraison**
- 1 luminaire LED de fête
3 piles (déjà intégrées)
1 mode d'emploi

<span><span></span></span>	<span><span></span></span>	<span><span></span></span>	<span><span></span></span>
<span><span></span></span>	<span><span></span></span>	<span><span></span></span>	<span><span></span></span>

<span><span></span></span>	<span><span></span></span>	<span><span></span></span>	<span><span></span></span>
<span><span></span></span>	<span><span></span></span>	<span><span></span></span>	<span><span></span></span>

- Votre mairie ou votre municipalité vous renseigneron sur les possibilités de mise au rebut des produits usagés.

- Afin de contribuer à la protection de l'environnement, veuillez ne pas jeter votre produit usagé dans les ordures ménagères, mais éliminez-le de manière appropriée. Pour obtenir des renseignements concernant les points de collecte et leurs horaires d'ouverture, vous pouvez contacter votre municipalité.

Les piles / piles rechargeables défectueuses ou usagées doivent être recyclées conformément à la directive 2006/66/CE et ses modifications. Les piles et / ou piles rechargeables et / ou le produit doivent être retournés dans les centres de collecte proposés.

- Le produit a été fabriqué selon des critères de qualité stricts et contrôlé consciencieusement avant sa livraison. En cas de défaillance, vous êtes en droit de retourner ce produit au vendeur. La présente garantie ne constitue pas une restriction de vos droits légaux.

- Consignes de sécurité**
- LISEZ ATTENTIVEMENT LES INSTRUCTIONS AVANT TOUTE UTILISATION DU PRODUIT! VEUILLEZ CONSERVER CE MODE D'EMPOI DANS UN ENDROIT SÛR !

- ⚠️ AVERTISSEMENT ! DANGER DE MORT ET RISQUE D'ACCIDENT POUR LES ENFANTS EN BAS ÂGE ET LES ENFANTS !** Ne jamais laisser les enfants manipuler le matériel d'emballage sans surveillance. L'emballage présente un risque d'étouffement. Les enfants sous-estiment souvent le danger. Toujours tenir le produit à l'écart des enfants.

- The produit peut être utilisé par des enfants âgés de 8 ans et plus ainsi que par des personnes ayant des capacités physiques, sensorielles ou mentales réduites ou manquant d'expérience ou de connaissances, s'ils sont surveillés ou s'ils ont été informés de l'utilisation sûre du produit et comprennent les risques liés à son utilisation. Les enfants ne doivent pas jouer avec le produit. Le nettoyage et l'entretien du produit ne doivent pas être effectués par des enfants laissés sans surveillance.
- Avant la mise en service, vérifiez si le produit présente des dommages. Ne mettez pas un produit endommagé en service !

<span><span></span></span>	<span><span></span></span>	<span><span></span></span>	<span><span></span></span>
<span><span></span></span>	<span><span></span></span>	<span><span></span></span>	<span><span></span></span>

- Pollution de l'environnement par la mise au rebut incorrecte des piles / piles rechargeables !**

Les piles / piles rechargeables ne doivent pas être mises au rebut avec les ordures ménagères. Elles peuvent contenir des métaux lourds toxiques et doivent être considérées comme des déchets spéciaux. Les symboles chimiques des métaux lourds sont les suivants : Cd = cadmium, Hg = mercure, Pb = plomb. Pour cette raison, veuillez toujours déposer les piles / piles rechargeables usagées dans les conteneurs de recyclage communaux.

Le produit a été fabriqué selon des critères de qualité stricts et contrôlé consciencieusement avant sa livraison. En cas de défaillance, vous êtes en droit de retourner ce produit au vendeur. La présente garantie ne constitue pas une restriction de vos droits légaux.

<span><span></span></span>	<span><span></span></span>	<span><span></span></span>	<span><span></span></span>
<span><span></span></span>	<span><span></span></span>	<span><span></span></span>	<span><span></span></span>

<span><span></span></span>	<span><span></span></span>	<span><span></span></span>	<span><span></span></span>
<span><span></span></span>	<span><span></span></span>	<span><span></span></span>	<span><span></span></span>

- Consignes de sécurité relatives aux piles / aux piles rechargeables**

- DANGER DE MORT !** Rangez les piles / piles rechargeables hors de la portée des enfants. En cas d'ingestion, consultez immédiatement un médecin !

- RISQUE D'EXPLOSION !** Ne rechargez jamais des piles non rechargeables. Ne court-circuitez pas les

<span><span></span></span>	<span><span></span></span>	<span><span></span></span>	<span><span></span></span>
<span><span></span></span>	<span><span></span></span>	<span><span></span></span>	<span><span></span></span>

Ce produit bénéficie d'une garantie de 3 ans à compter de sa date d'achat. La durée de garantie débute à la date d'achat. Veuillez conserver le ticket de caisse original. Il fera office de preuve d'achat.

Si un problème matériel ou de fabrication devait survenir dans 3 ans suivant la date d'achat de ce produit, nous assurons à notre discrétion la réparation ou le remplacement du produit sans frais supplémentaires. La garantie prend fin si le produit est endommagé suite à une utilisation inappropriée ou à un

